

Double Knit Felted Chess Board

by

Judith A Helms

Copyright 2011



This felted Chess Board made with 3 ply wool ( Patton's Classic), and size 10 1/2 needles. yields about a 2 1/4 inch square when felted. The smaller version using wool fingering yarn and size 5 needles, and yields about a 1 1/8 inch square.

Yarn/ needle requirements:

**Large** - 2 skeins of 3 or 4 ply wool for **MC** ( main color). (I used Patton's classic wool)

2 skeins for **CC** (contrast color)

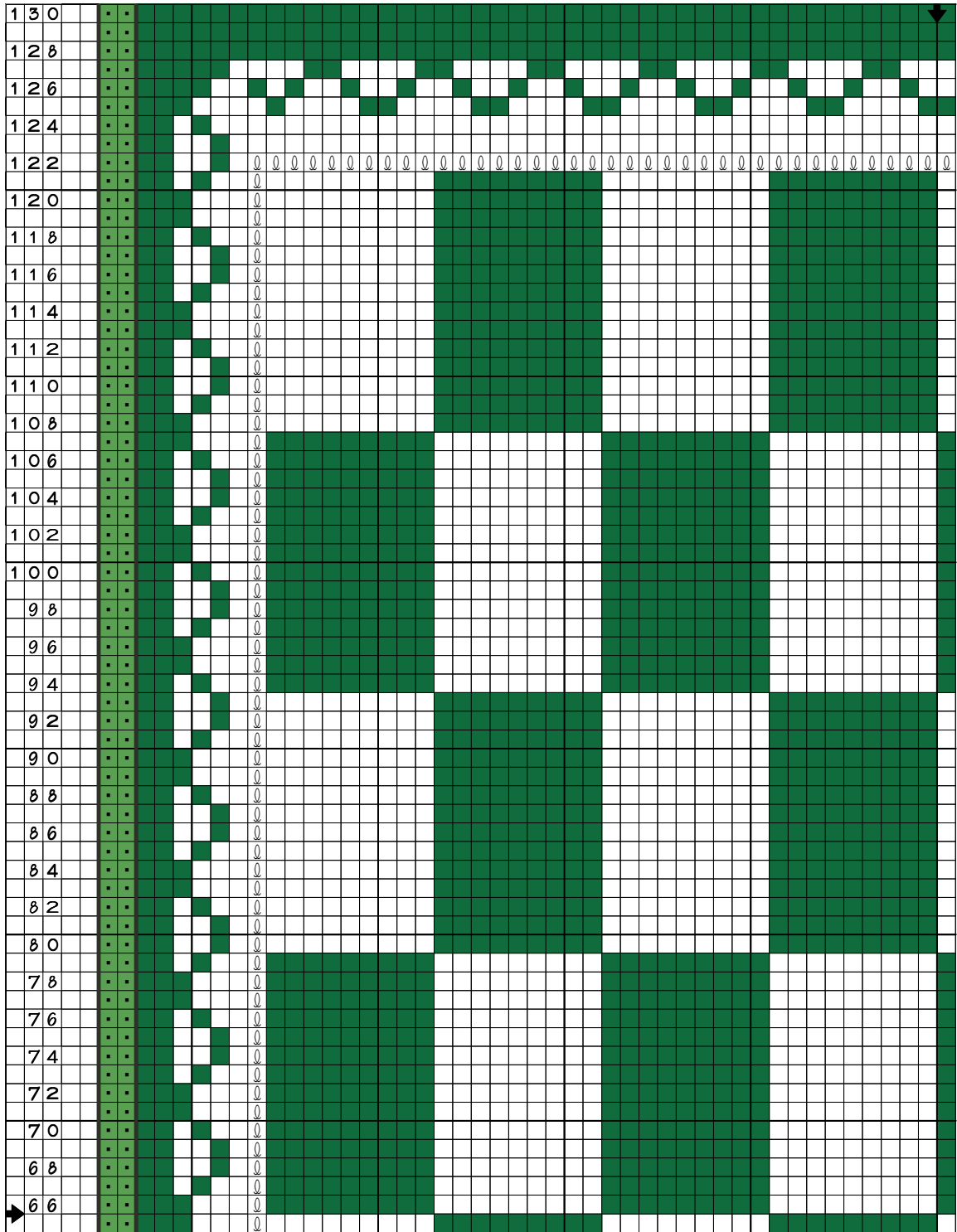
Needles - size 10 1/2 US

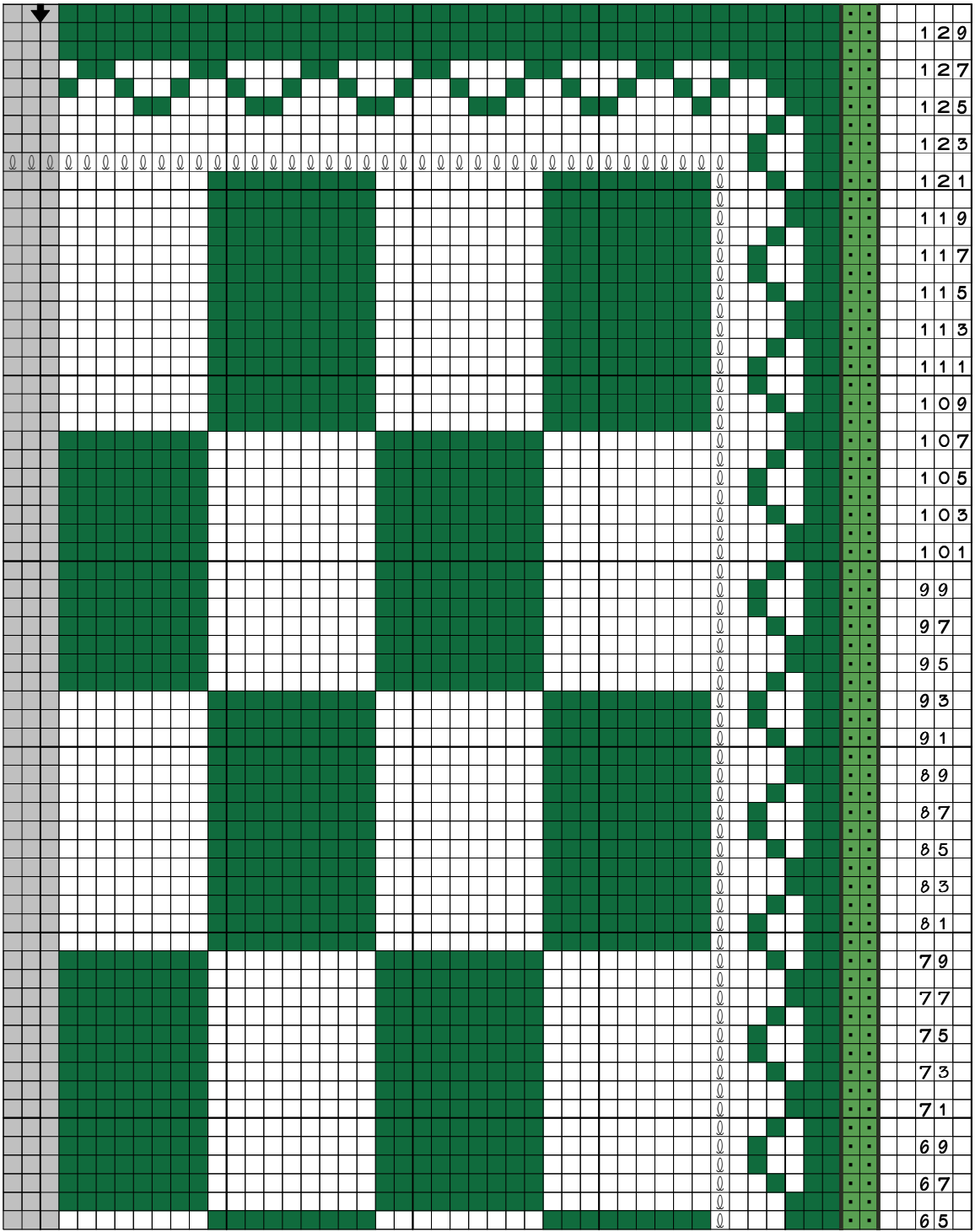
**Small** - 2 skeins of Palette wool fingering yarn (at least 235 yds each)

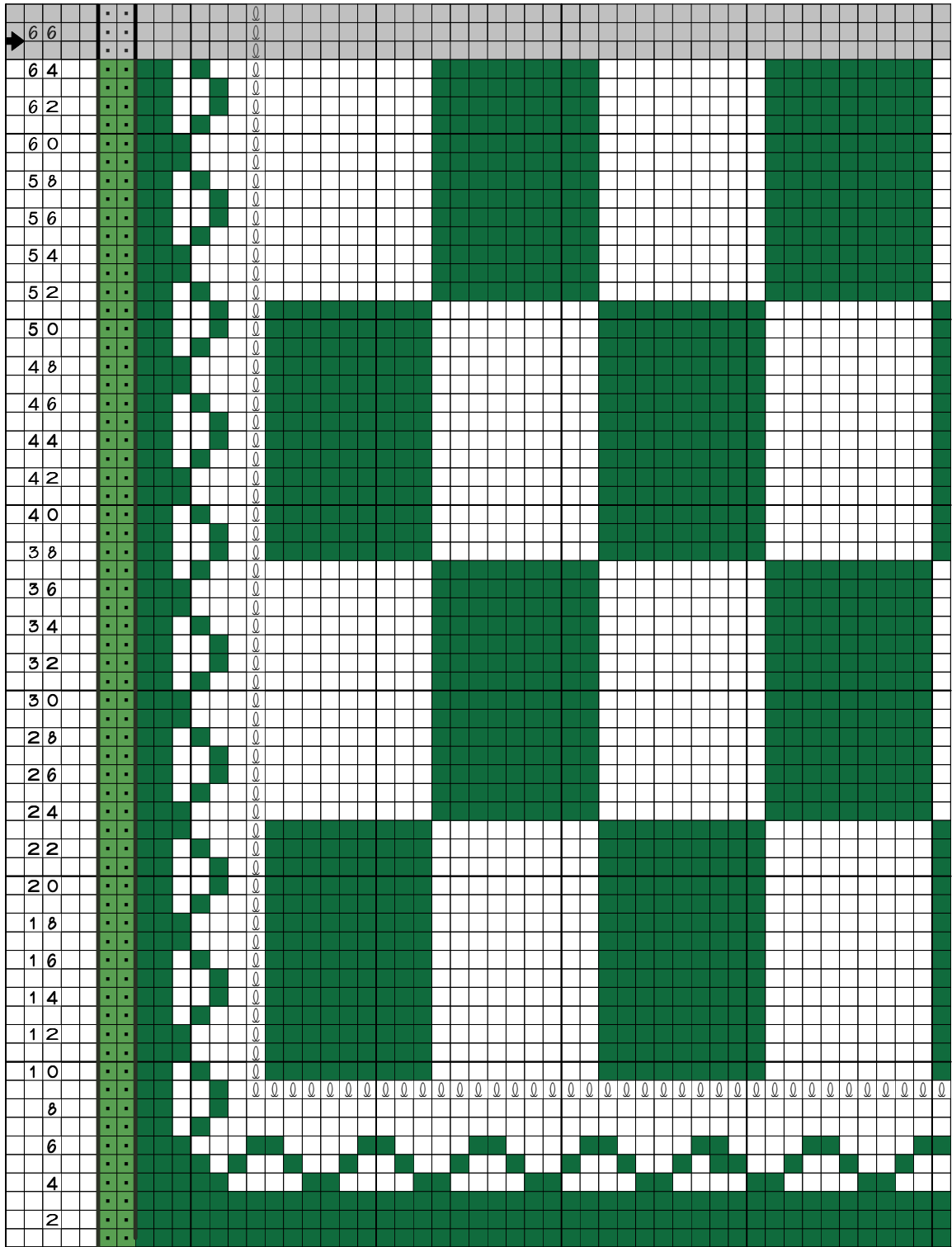
1 - for main color

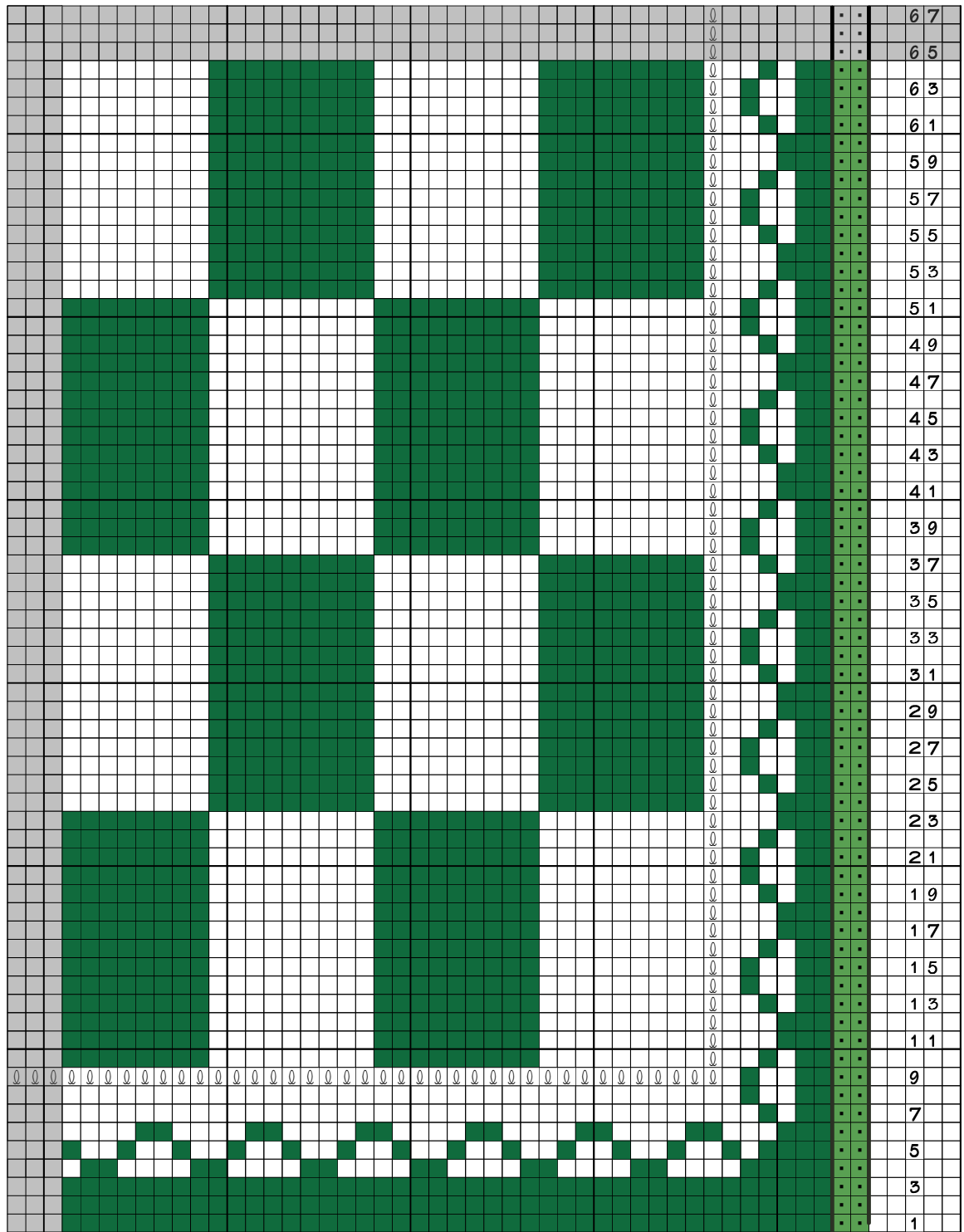
1 - for alternate color.

Needles - size 5 US










## Pattern Key

**K = knit**  
**P = purl**  
**SI = slip one**  
**LN = left needle**  
**RN = right needle**  
**MC = main color**  
**CC = contrasting color**  
**BO = bind off**  
**CO = cast on**  
**DK = double knit**  
**DKP = double knit pair**

## Knitting Notes

1. **Odd rows** of chart are read from right to left and are worked in colors as indicated.
2. **Even rows** of chart are read from left to right, and are worked in the opposite color indicated on the chart.
3.  This symbol indicates line of optional overlay stitches to define the center section of the chess board.
4. This Chart is worked with 2 DKP's in MC only at the beginning and ending of row. This gives both side a dark edge.

Read the instructions below.

With MC Knit first st of DKP. Bring both yarns to front, lifting CC from the *\*slip knot( see cast on instructions)* tied at the beginning of your cast on. Drop CC to the left of MC. Pick up MC and purl the 2nd stitch of the DKP bringing yarn of MC over the top of the CC. Bring both yarns to back. With MC, knit first stitch of 2nd DKP. Bring both yarn to front, purl 2nd stitch of pair with MC. Bring both yarn to back. You have just completed the 2 edge DKP's of the chart. *The CC is riding in between the MC stitches (down the middle).* Turn.

Center section- With yarns in back, knit 1st stitch of DKP with MC. Bring yarns forward. Purl 2nd stitch with CC. Continue across till the last 2 pairs of DK

remain on the LN. [With both yarns back, knit 1st stitch of DK pair with MC. Bring both yarns forward, CC to left of MC. With MC purl 2nd stitch of DKP . Bring both yarns back and repeat the process [ ] for the last DKP, making sure that you MC is going over CC on the last purl. Turn.

Repeat this procedure for the beginning and ending of each row.

You will note that I have outlined these stitches in black lines.

### **Casting On**

For this pattern I used a long tail cast on. It takes about 60 inches for a row, so I peeled off about 72 inches for my tail. When making your slip knot, incorporate about 6 inches of CC. This attaches the CC for use in the first row of the chart. This slip knot is NOT counted in the stitch count and will be taken out later, and the ends will be woven in.

With MC, CO(cast on) 90 stitches (NOT counting the slip knot). Turn.

Set up DKP's- MC only, K 1, P 1 in each stitch, across. Turn.

Row 1. Begin chart, working the first two DKP's with MC only(see knitting notes). Work center section using both colors, MC for the K, and CC for the P. Work across to the last 2 DKP's. Work as instructed in "knitting notes" with MC only. Turn. You now see the CC section taking shape in the center.

Continue working the chart through row 130.

### **Binding Off**

**Set up row for BO** (bind off). Work all DKP's using MC only, moving the CC back and forth as you have been doing with the edge stitches.

When you are finished with this row, break off the CC leaving about a 6 inch tail.

**Bind off row.** Use single strand of MC only - Slip the first knit stitch knitwise, purl the next stitch then pass the slipped knit stitch over the purl. One stitch is left on RN. Now [Sl 1 (knitwise), P 1, PSSO. You now have two stitches on the RN. Pass the one to the right over the one on the left. \* *You have just bound off one stitch.*

Continue across in this manner: [Sl 1 (knitwise), P 1, PSSO, BO 1]; repeat across, until all stitches are bound off.



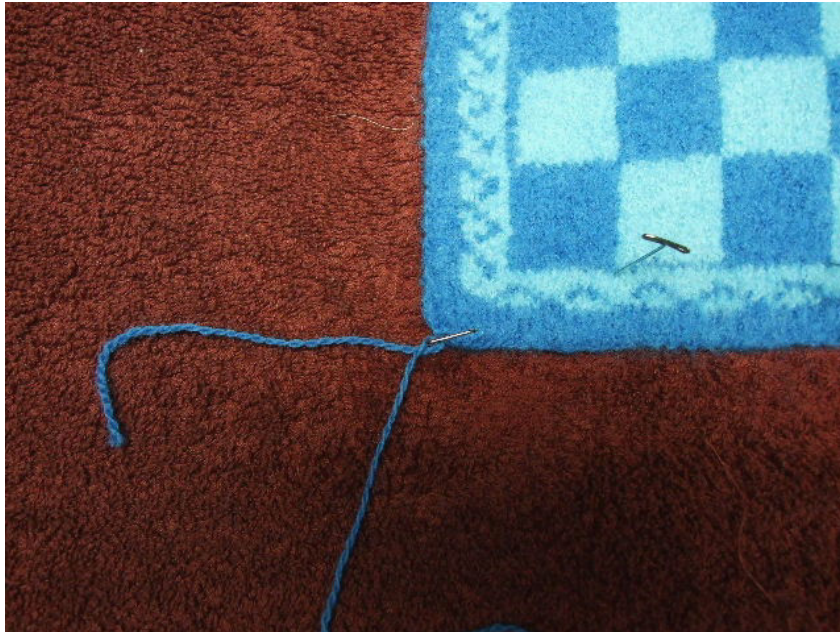
## Finshing Up

Weave in all your ends.

Use your favorite felting/fulling technique work the large version until you achieve the 2 1/4 inch squares. The finished board should measure about 19 inches square.

The smaller version should felt to a 12 1/4 inches square. The inside, or playing field should be about 10 1/8 inches square.

To keep your sides straight, work a single strand of the MC through each edge, using a sharp needle. Use these strands to ease the access from the edges, and square your board. Block the piece with "T" pins.



\* You may have to use the hot and cold shock treatment to get it small enough. However, it's up to you how much you want to full/felt it.

\*\* After your board has dried for a couple of hours, turn it over and check the other side to see if you need to square up some of the playing field.