

Knitted Lace Curtain

By Judith A Helms



Project Requirements

Yarn- 2 balls of **Curio from Knitpicks.com**

Needles - #5 circle needle , 32 inches long. * You can use straights if you like.

1 or 0 circle needle to pick up stitches to close casing. (The longer the better- mine is 40 inches)

1 crochet needle = #D or E


6 tubes of number .06 beads = approx 900


* You can also choose to work the Nubbs in the valance as well.


** Before you begin knit up a swatch of each lace pattern, and block it. Be sure to allow at least 4 inches for ease in each panel.


My original panel on the bottom half of the 24 inch window, was to narrow. Although I pressed it wider to make it fit, if I made it again, I would use 6 repeats instead of 5 in the center of the panel. I consider it a lesson learned. I made those allowances in the valance and it worked much better.

Chart Symbols


Knit = 

Purl = 

Knit 3 tog =  (this symbols represents the following; slip 1 st knitwise, knit 2 tog, pssso

YO (Yarn over) = 

Knit 2 tog = 

SSK = 

Purl Nubb tog = 

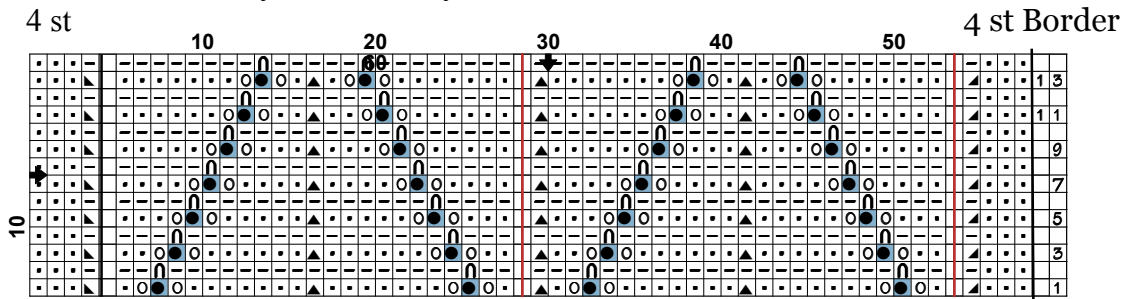
Knitting Notes Main Panel

1- Swatch each pattern. Use this swatch to determine the number of repeats you will need for your panels. This will determine the number of stitches to cast on. Don't forget to add the ease I mentioned before.

2. When you have knitted your length minus one inch, knit 2 more rows ending with the knit row. With WS facing you, using a contrasting thread, and yarn needle, run yarn through the second purl bump below the needle, working from left to right. This give you a visual line from which to determine the bottom edge of the casing. Knit (in Stotckinette) the require inches needed for your casing. How much? The circumference of your rod plus at least 1/2 inch. When you have reach the desired length, run your #0 circle needle through the loops indicated by your contrasting yarn. With both needle tips pointing to the right begin three needle bind off. See YOUTOUBE for demo.

Curtain Panel Charts

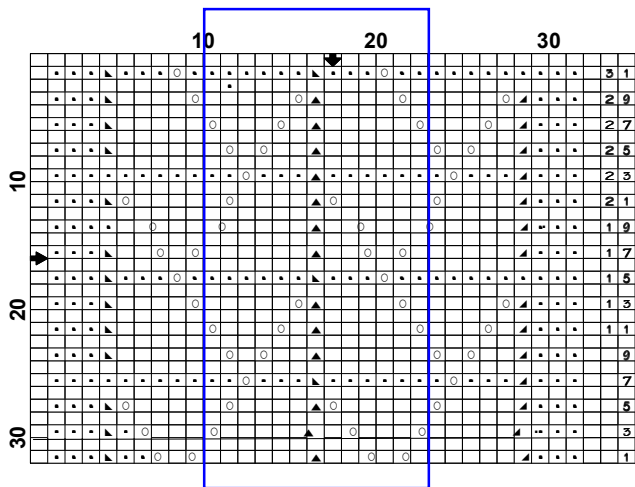
Chart A - Lilly of the Valley Lace border.



Left edge section with 4 st Border

Repeat this section as many times as needed for your width (24st)

Chart B- used for body of lace panel above Lilly of the Valley bottom border.



Replacing Bobbles with Beads In Valance



Set up-beads are pre-strung on yarn

First off, normal Nubbs(bobbles) are completed on the purl row(wrong side) of most designs, so I decided it would also be the proper row to insert the beads that will replace the Nubbs in the pattern.

In previous row (RS) I set up my bead insertion with a **YO, K1, YO**.

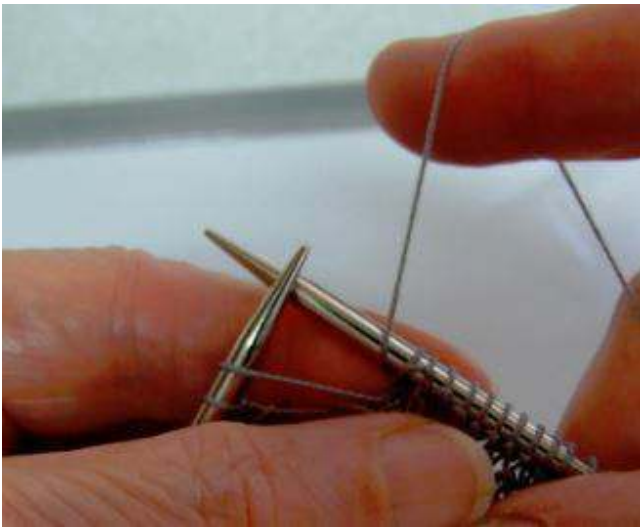
1. When you come to that position on the WS, purl the first YO, then slipped the knitted st of the sequence onto the right needle (RN).



2. Bring the working yarn to the front, between the needles. Move the slipped st back to the left needle (LN).



3. Slip the beads you have chosen to use (in this case I used 3) down the yarn to the needle.



4. Put you index finger on the beads and push them down behind the RN, and with the thumb of your left hand helping hold the bead firmly bring the working yarn back to the front between the needles and purl the original slipped st.



5. Release the beads and shape as desired. In this case I opted for the triangle. Take up any slack in the working yarn until the bead grouping hangs as desired.

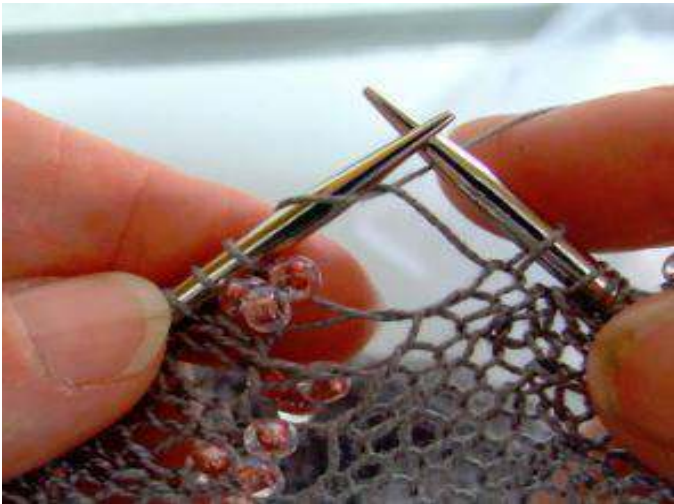


6. While holding the beads in place with the thumb and index finger of the left hand, purl the YO to the left.

** the photo at left, shows the position of my fingers as I prepare to purl the last YO of the sequence.*



The photo at left, shows WS view of bead cluster.



This photo shows the RS view.

* This is the time to adjust your cluster **if needed**. If it is a bit tight, then release the purled YO, and loosen the purl st holding the beads a bit.

You can also adjust from the RS, by using the tip of your right needle. Loosen the sts right to left-first the last st, (the one made in the YO) then the st holding the bead cluster.

Once you are satisfied, then turn back to the WS and continue the row.

** I suggest doing a swatch first and practicing the procedure using different numbers of beads.

Valance with Beads for Nubbs (bobbles)



This version measures 33 ¼ inches wide by 20 ½ inches long on sides. Of course when it dries it will shrink a bit, so I blocked this about 4 inch larger than my rod width.

Knitting Notes for Valance

1. I began this project by knitting the right side extension first, finishing with row 75 (knitted row). But these stitches on a hold, or piece of waste yarn.
2. Begin the left side extension. Work until you have completed row 75. With stitches remaining on the needle, work row 76 (WS). After you have worked the last of the 44 stitches, cast on the center section, for this chart, or 111 sts. I [used a knitted cast on](#).
3. Slip the remaining stitches of the right side extension on the left needle and finish row 76, purling across these stitches to the last 3 st. Knit 3 border sts.
4. Continue working the chart, using nubbs, as in the first panel, or you can substitute the beads as I did.
5. When the pattern portion of the chart is finished work in even Stockinette for about an inch. Place Work 2 more rows, ending with a knit row. With purl side facing you, using a threaded contrasting yarn, working from left to right, run yarn needle through the purl bumps on the second row below the needle. Leave at least a 6 inch yarn tail at each end.

This line will indicate the stitches to pick up to close the casing.

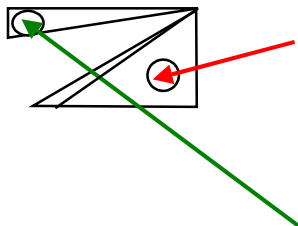
6. Knit in Stockinette for at least 2 inches, or more for casing. This measurement depends on the size rod you are going to use. Measure the circumference of your rod and add at least ½ inch for ease.

7. When the proper depth of your casing is done, finish with a purl row. Next, with a size 0 circle needle, about 40 inches long, pick up stitches of the row indicated by your contrasting yarn.

With both needle tips pointing to the right, using a 3 needle bind off, join the casing. If you have never had the occasion to use a 3 needle bind off, check on YOUTUBE for some excellent videos.

8. Finish by weaving in the ends. Soak your valance, rinse, wrap in towel, and block to measurements.

* If you wish to finish your curtain with a beaded edge, **string your beads onto the yarn.** With a crochet hook about the size of your knitting needle, and working from the WS of the valance, begin by make a slip knot on the hook. Slip the hook through the loop at the bottom of the right side extension, make one slip st. Slide first bead down to rest to the left of your hook, then drop the yarn over the hook to the left. Bring the yarn through both loops.



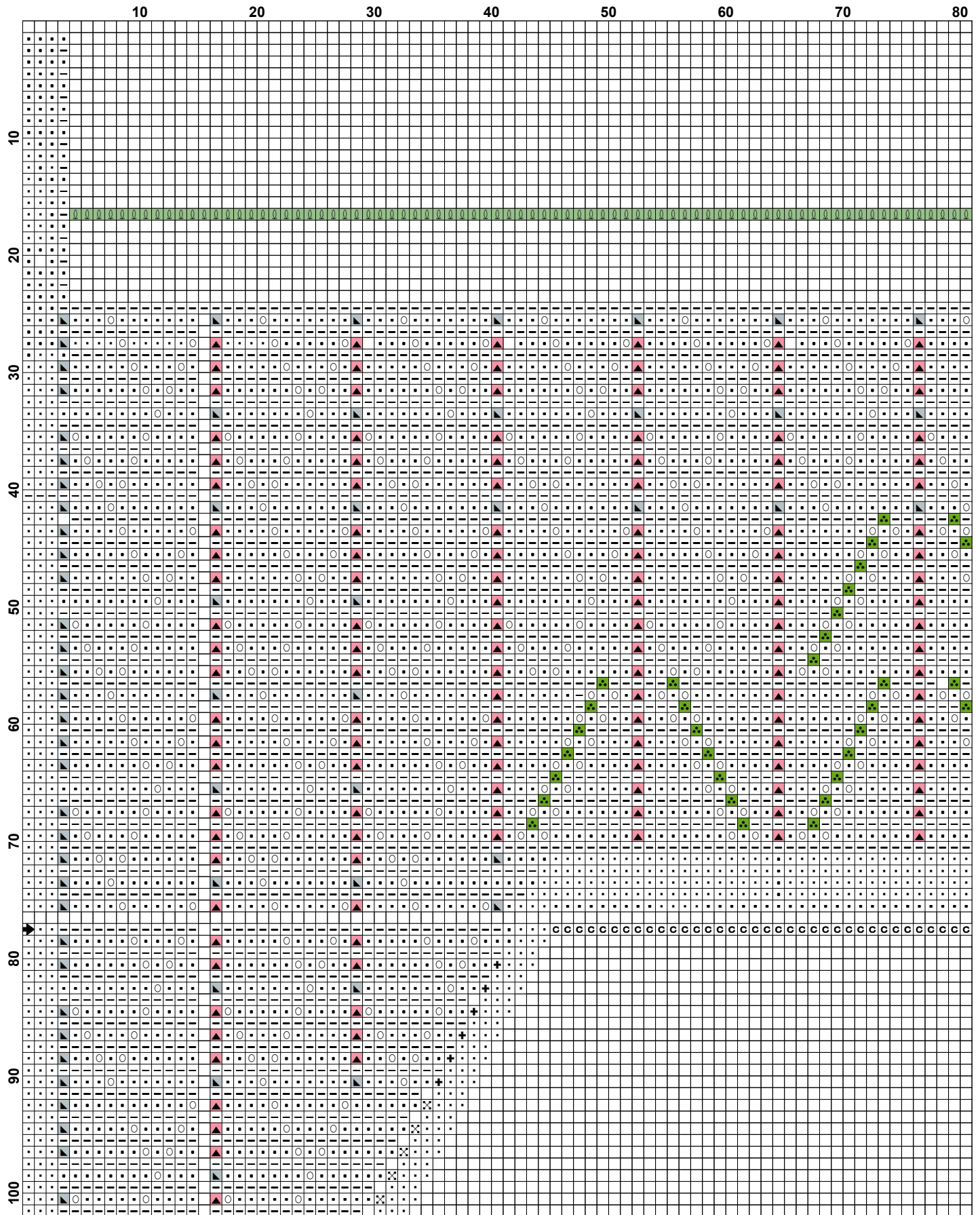
To the left is a diagram of how the edge sts look from the back side.

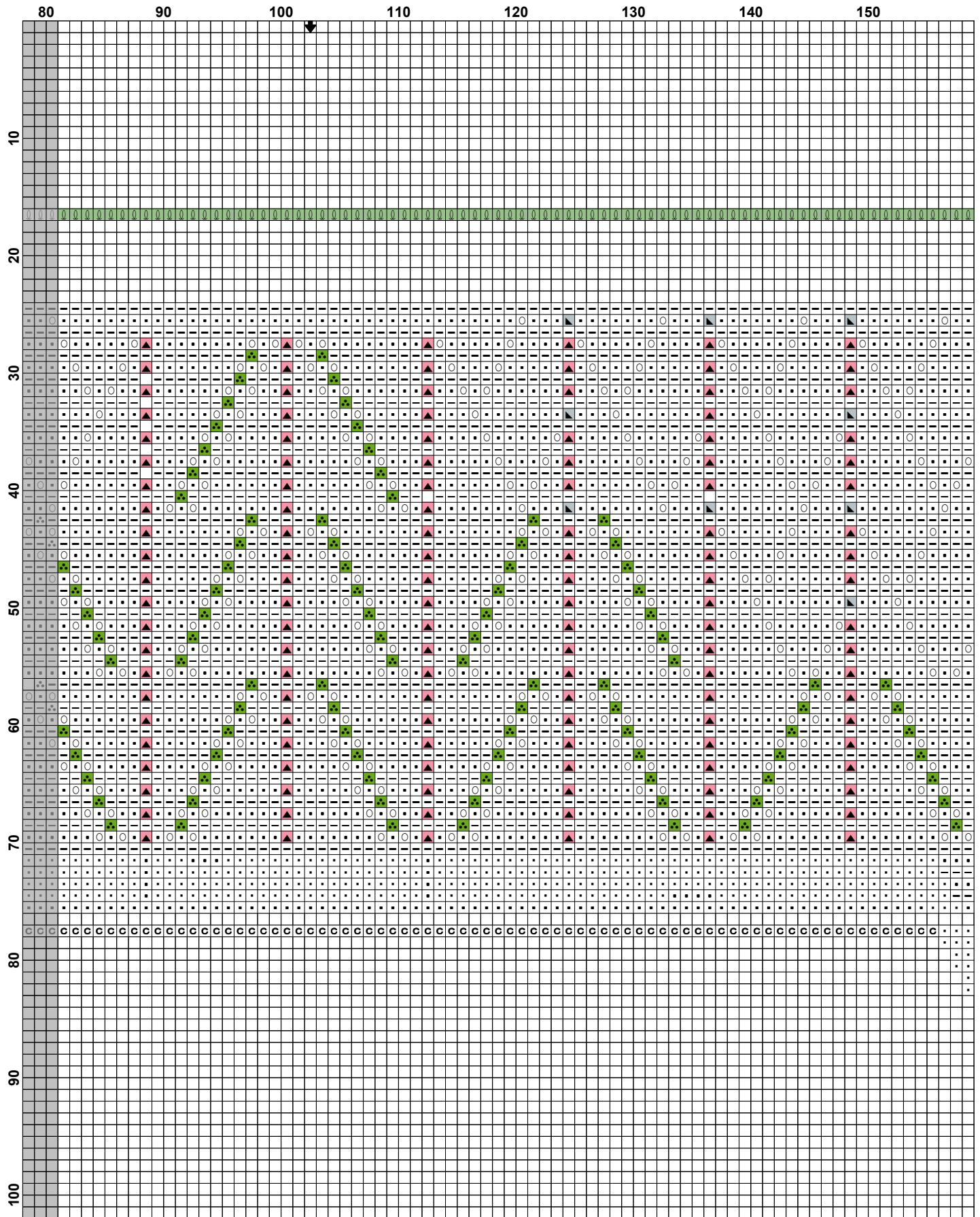
The first st (in red)

The second st is in green.

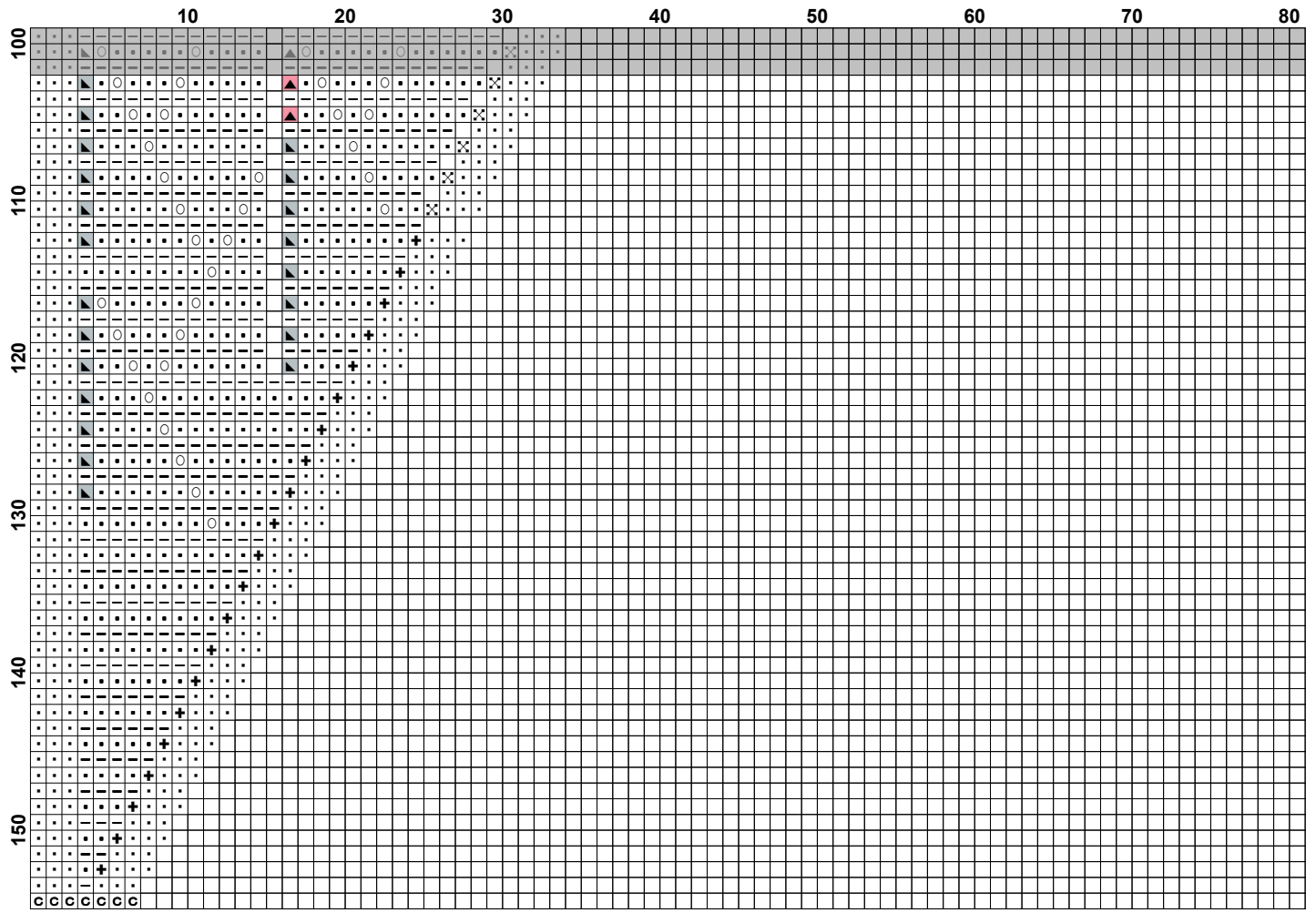
* When you reach the opposite side, you will notice that the stitch pattern will be in reverse.

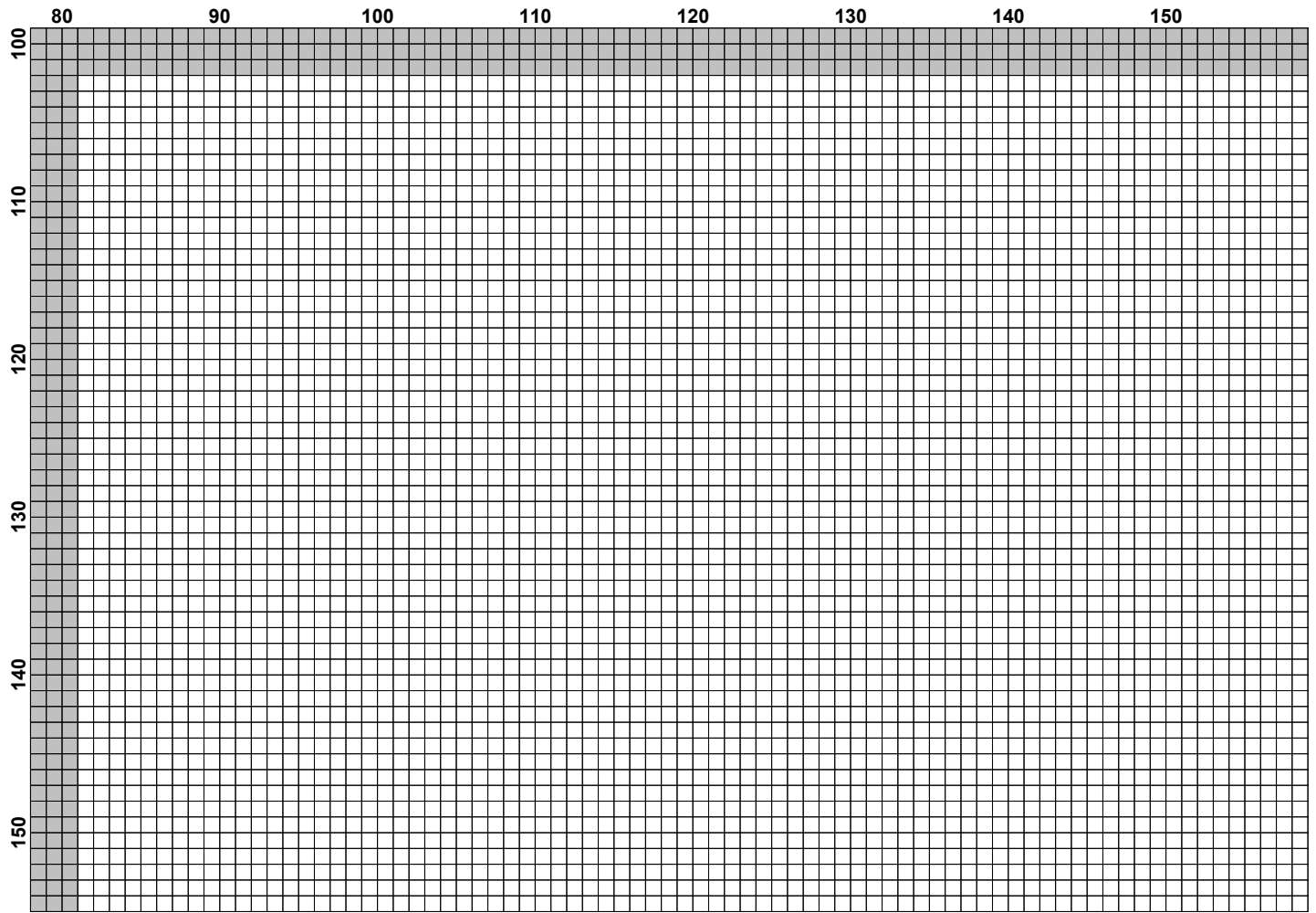
I just happen to notice this so I thought I would pass it on.

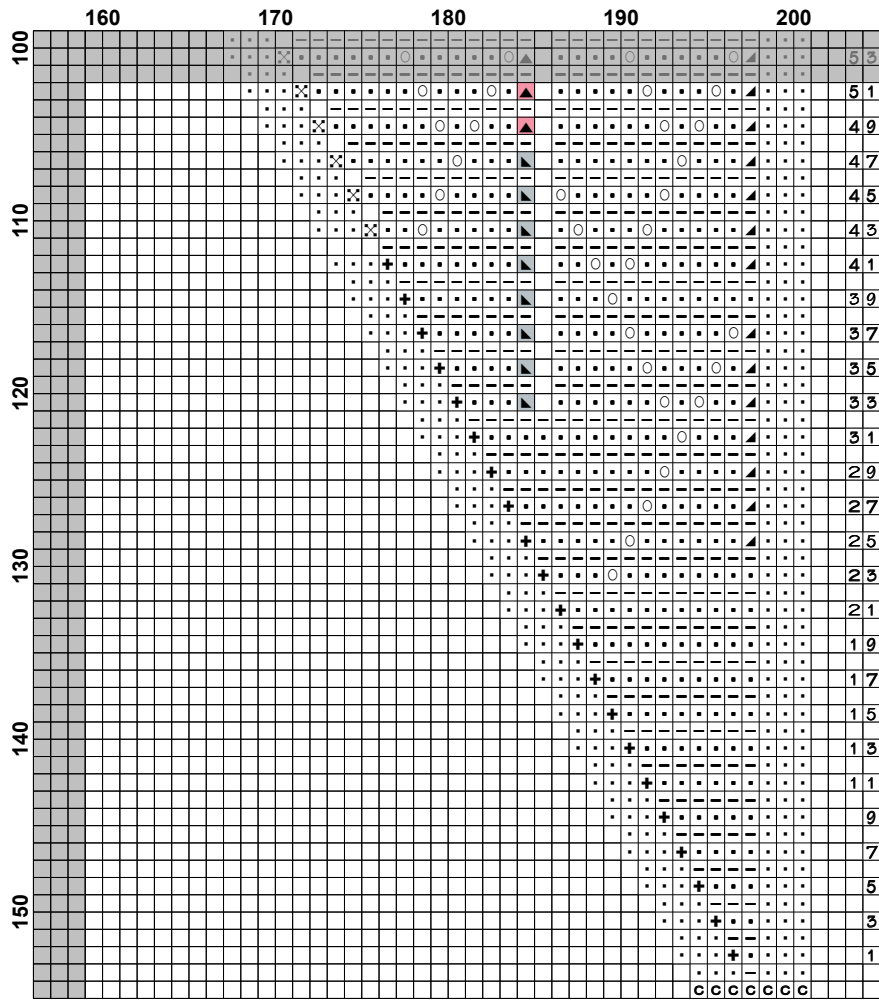




	160	170	180	190	200	
						151
						149
						147
						145
10						143
						141
						139
						137
	0	0	0	0	0	135
20						133
						131
						129
						127
						125
30						123
						121
						119
						117
						115
40						113
						111
						109
						107
						105
50						103
						101
						99
						97
						95
60						93
						91
						89
						87
						85
70						83
						81
						79
						77
						75
80						73
						71
						69
						67
						65
90						63
						61
						59
						57
						55
100						53




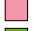








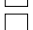
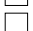
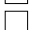
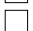

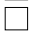










Fabric: Aida 6, White
 205w X 154h Stitches
Size: 6 Count, 34-1/8w X 25-5/8h in

Floss Used for Full Stitches:

Symbol	Strands	Type	Number	Color
	2	DMC	321	Christmas Red
	2	DMC	368	Pistachio Green-LT
	2	DMC	415	Pearl Gray
	2	DMC	894	Carnation-VY LT
	2	DMC	906	Parrot Green-MD
	2	DMC	B5200	Snow White
	2	DMC	B5200	Snow White
	2	DMC	B5200	Snow White
	2	DMC	B5200	Snow White
	2	DMC	B5200	Snow White
	2	DMC	B5200	Snow White
	2	DMC	B5200	Snow White
	2	DMC	B5200	Snow White
	2	DMC	B5200	Snow White
	2	DMC	B5200	Snow White
	2	DMC	B5200	Snow White
	2	DMC	B5200	Snow White
	2	DMC	B5200	Snow White
	2	DMC	B5200	Snow White
	2	DMC	B5200	Snow White
	2	DMC	B5200	Snow White
	2	DMC	B5200	Snow White