

J's Lace Curtain Design II

60 inch Valance



I originally designed this curtain for my bathroom window which measures only 24 inches wide. However, since that time I have had requests for instructions for a larger applications.

To that end I have designed extended side panels for your **valances** and have made charts to show the repeats for larger windows. The charts in this pattern are for a 60 inch valance span.

Since it is the nature of the lace curtain is to pull in from the sides, it is important that you make your curtain wide enough to have naturally without the need for stretching it to extremes when blocking.

I don't know about you but I don't want to have to wash and block a curtain every month to keep it the size it needs to be.

Knitting Notes

Materials- I always use Curio from Knitpicks as it has lots of yardage (720) and is a great price. It is also soft and shiny- a great lace yarn. From my experience making the bathroom window, it took one ball plus a smidge of another to do the window in the picture. That said, I would buy at least 2 balls for every 24 inches of window. I am going to make a 60 by 30 valance, and 60 by 24 straight panel, so I will opt for ordering 6 balls to start. Knitpicks is great about exchanging or returning unopened yarns. Their colors are also very consistent.

Needles- #5 circle needle at least 40-47 inches.

Gauge - 8 sts to 6 rows

Notes- All rows are begun with yarn in front, slipped stitch purlwise, yarn back knit next stitch. This helps to keep your curtain edges straight.

I have designed the yarn over **increases** so that the slipped stitch remains on the edge.

I use a knit cast on for this project. Check YOUTUBE for a video if you have not do it before. It simply starts with a slip knot, knit into the loop, put the new loop on the left needle by putting the tip of the left needle in the new loop from front to back. Continue across until you have 28 sts on the left needle to begin the chart.

Knitting Notes-cont

I am not going to write the entire pattern instructions, as I have provided chart pattern symbols; however, those rows that need a bit of special instructions or explanation I have marked with a “red” star on the right. For these specify rows I have written instructions, along with a knitting key.

First, I suggest that you download the all the PDF files for the pattern. left and right side panels, and center panel. Print them off (except for the last page) and tape them together.

You will work rows **1 -111** on the **right side** panel chart, break your yarn, and put knitting on a separate needle or holder. Next, work rows **1 -112** on the left side panel chart. **Row 112** will be the connecting row between the two side panels. At the conclusion of row 112 of the left side panel you will turn your work and KNIT cast on the amount of stitches indicated on the **Center Section** chart. (this center span it will be 281 sts).

Once these stitches are on your needle, you will turn your work to the purl side. With the stitches of the right side panel on your left needle, continue purling across working any Nubbs to last 3 sts; K3.. Turn. At this point you are set up to knit across the entire curtain.

I will write out the instructions for the first 5 rows of the entire valance, then you can follow the chart as established from there. Once you reach the top, you can add as many rows of Stockinette as you wish before forming the casing for the rod.














Casing

When the pattern portion of the chart is finished work in even Stockinette for about an inch. Work 2 more rows, ending with a knit row. With purl side facing you, using a threaded contrasting yarn, working from left to right, run yarn needle through the purl bumps on the second row below the needle. Leave at least a 6 inch yarn tail at each end.

This line will indicate the stitches to pick up to close the casing.

Knit in Stockinette for at least 2 inches, or more for casing. This measurement depends on the size rod you are going to use. Measure the circumference of your rod and add at least 1/2 inch for ease.

Knitting Symbols for Chart

-  Knit
-  Purl
-  Slip one, knitwise, K 2 tog, then pssso (pass slipped stitch over the two stitches you just knit together).
-  Knit two stitches together = Right leaning K 2 tog.
-  SSK = slip next 2 stitches knitwise, return them to the left needle, then knit both stitches through their respective back loops. This results in a left leaning K 2 tog.
-  Purl **all of the loops** of your nubb together.
-  Nubb = K 1, YO, K 1, YO k 1 (5 loops)
-  Yarn over, or Yarn front.
-  Slip stitch * This pattern requires all slipped stitches be done purl-wise.
-  Knit through back loop of yarn over made in previous row.
-  Special instructions for row, or rows
-  **This symbol is for setting up the first SSK in row 3 of the Right side panel only.**
- S 1, K1 tbl, then pssso (pass slipped stitch over stitch just made) You only do this once in each Lilly of the Valley arch sequence.
-  This represents the first cast on st of the 18 stitches used to start another arch. Illustrated on page 4.

Written Instructions

Knitting Key

K= knit, **P** =purl, **wk** = work

YO = yarn over(unless otherwise indicated this is a **yf** move.

K tbl= knit through back loop

YF = yarn front **YB** = yarn back

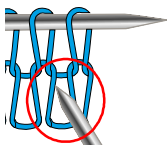
St = stitch **K 2 tog** = knit two stitches together

K 3 tog = Slip one st knitwise, knit next 2 stitches together, Pssso, pass slipped st over the 2 stitches knitted together.

SSK = slip 2 sts knitwise, return to left needle, then knit the 2 sts through back loop.

Nubb = K 1, YO, K 1, YO, K 1 (5 loops)

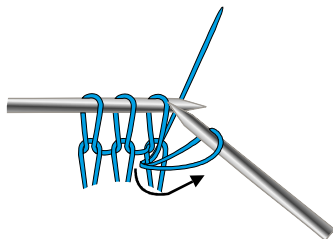
A



Casting on the additional 18 sts.

To begin your cast on , insert the tip of your right needle into the space between the last 2 sts on the left, and one row down, as illustration “A”, on the left in the **red circle**.

B



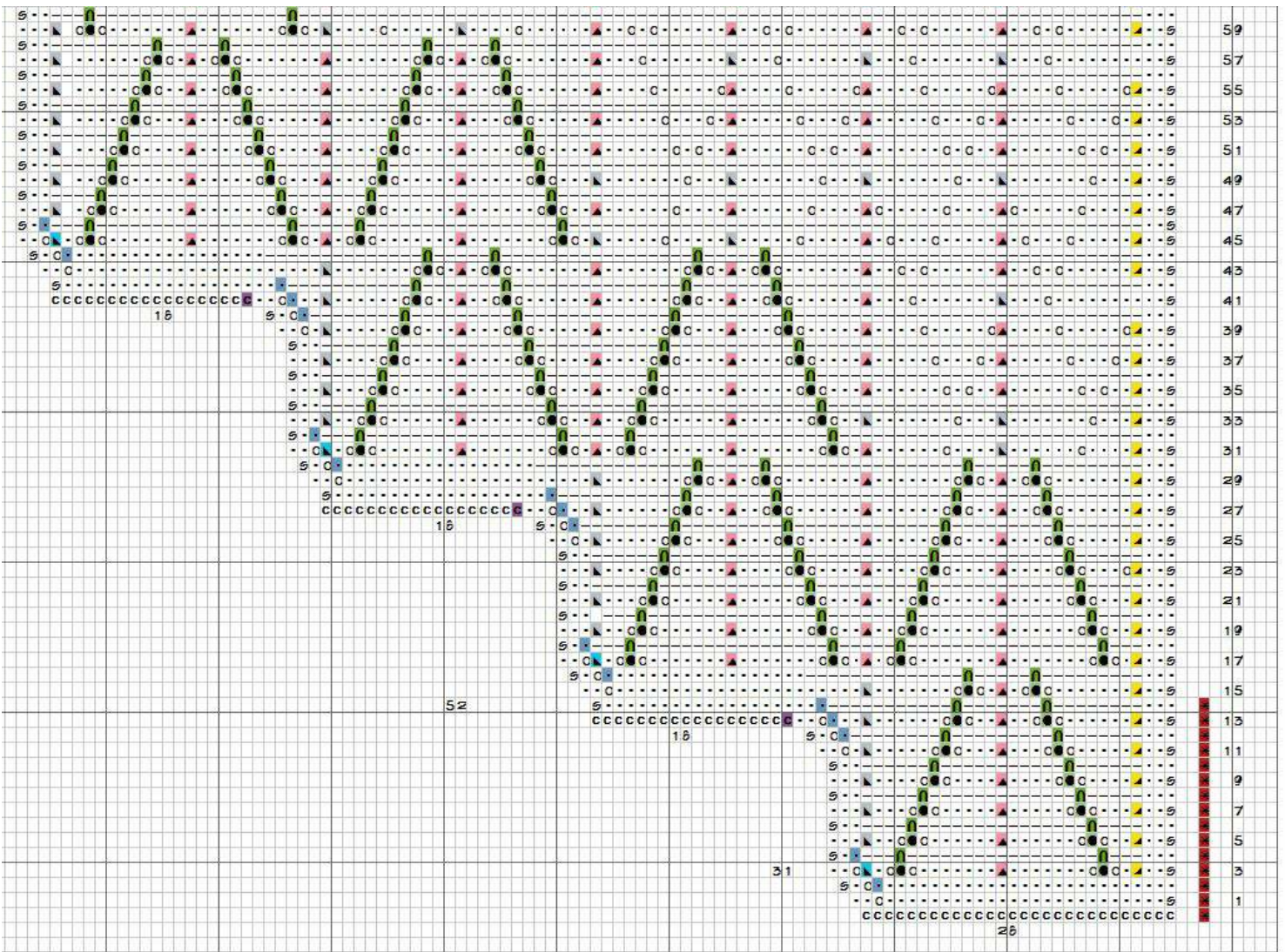
Knit one st. bringing the loop through and place it on the left needle. “B”

Adjust the tension so that it makes a smooth transition in the curve to the stitches you are now going to cast on.

*** This stitch counts as stitch “ 1 “ of the 18 sts you are to cast on for the next addition.

Now knit cast on 17 more sts, as you did for the original cast on. Keep it relaxed.

Right Side Lace Curtain Panel Sample Chart



Right side Panel Instructions

Begin by using a knit cast on. Make slip knot on needle. Insert needle into loop and knit one. Slip this stitch on the left needle, picking up the loop with the left needle tip from front to back. Continue across until you have **28 stitches** on the needle. **DO NOT CAST ON TIGHT. Just allow your loops to rest smoothly on the needle.**

Row 1: S 1, K 25, YO , K 2. Turn **29 sts**

Row 2: S1, K 1, YO, K 1 tbl, K 26. Turn **30 sts**

Row 3: S1, K 2, K 2 tog, K 1, YO, wk Nubb, YO, K7, K 3 tog, K 7, YO, wk Nubb, YO, K 1,

■ **work special ssk** - slip 1 st knitwise, K1 tbl (in the yo from previous row), now slip the slipped st to the right over the stitch just made. This sets up your first SSK on the left side edge of the arch. *You will do this for each additional arch.*

Finish the row with YO, K 2. Turn. You should now have **31 sts.**

Row 4: S 1, K 1, K 1 tbl: purl across through last Nubb. Last 6 sts- P 3, K 3. Turn.

Rows **5-10:** Follow chart as established.

* **Row 11:** S 1, K 2, K 2 tog; K 5, YO, wk Nubb, YO, K 3, K 3 tog, K 3, YO, wk Nubb, YO, K 5, SSK, K 1, YO, K 2. Turn. **32 sts**

Row 12: S 1, K 1, YO, K 1 tbl; Purl across to last 3 sts. End K3. Turn **33 sts**

Row 13: S 1, K 2, K 2 tog; K 6, YO, wk Nubb, YO, K 2, K 3 tog, K 2, YO, wk Nubb, YO, K 6, SSK, K 2, K 1 tbl, YO, K 2. Turn. Cast on 18 sts as you did for left side panel. **52 sts**

Row 14: S 1, K 19, K 1 tbl. Purl across to last 3 sts. K 3. Turn. **52 sts**

Row 15: S 1, K 2, K 2 tog, K 7, YO, wk Nubb, YO, K 1, K 3 tog, K 1, YO, wk Nubb, YO, K 7, SSK, K 22, K 1 tbl, YO, K 2. Turn. **53 sts.**

Row 16: S1, K 1, YO, K 1 tbl, K 17; purl across to last 3 sts. K 3. Turn. **54 sts**

Row 17: Row 15: S 1, K 2, K 2 tog; K 1, YO, wk Nubb, YO, K7, K 3 tog, K 7, YO, wk Nubb, YO, K 1, K 3 tog, K 1, YO, wk Nubb, YO, K7, K 3 tog, K 7, YO, wk Nubb, YO, K 1,

■ **work special ssk** - slip 1 st knitwise, K1 tbl (in the yo from previous row), now slip the slipped st to the right over the stitch just made. This sets up your first SSK on the left side edge of the arch. Finish the row with YO, K 2. Turn. You should now have **55 sts.**

Row 18: S 1, K 1, K 1 tbl; Purl across, purling Nubbs tog, to last 3 sts. K 3. Turn. **55 sts.**

Rows 19-24: Work chart as established.

* **Row 25:** S 1, K 2, K 2 tog; K 5, YO, wk Nubb, YO, K 3, K 3 tog, K 3, YO, wk Nubb, YO, K 5, K 3 tog; K 5, YO, wk Nubb, YO, K 3, K 3 tog, K 3, YO, wk Nubb, YO, K 5, SSK, K 1, YO, K 2. Turn. **56 sts**

Row 26: S 1, K 1, YO, K 1 tbl; Purl across t, working 4 Nubbs to last 3 sts. End K3. Turn. **57 sts**

Row 27: S 1, K 2, K 2 tog; K 6, YO, wk Nubb, YO, K 2, K 3 tog, K 2, YO, wk Nubb, YO, K 6, K 3 tog, K 6, YO, wk Nubb, YO, K 2, K 3 tog, K 2, YO, wk Nubb, YO, K 6, SSK, K 2, K 1 tbl, YO, K 2. Turn. Cast on 18 sts as before. **76 sts.**

Row 28: S 1, K 19, K 1 tbl. Purl across working 4 Nubbs as before to last 3 sts. K 3. Turn. **76 sts**

Row 29: S 1, K 2, K 2 tog, K 7, YO, wk Nubb, YO, K 1, K 3 tog, K 1, YO, wk Nubb, YO, K 7, K 3 tog, K 7, YO, wk Nubb, YO, K 1, K 3 tog, K 1, YO, wk Nubb, YO, K 7, SSK, K 22, K 1 tbl, YO, K 2. Turn. **77 sts.**

Row 30: S1, K 1, YO, K 1 tbl, K 17; purl across , working all Nubbs as before to last 3 sts. K 3. Turn. **78 sts**

Row 31: **Begin leaf lace pattern-** S 1, K 2, K 2 tog; K 4, YO, K 6, SSK, K 4, YO, K 6, K 3 tog, K 1, YO, wk Nubb, YO, K 7, YO, K 3 tog, K 7 , YO, wk Nubb, YO, K 1, K 3 tog, K 1, YO, wk Nubb, YO, K 7, K 3 tog, K 7, YO wk Nubb, YO, K 1,

■ **work special ssk** - slip 1 st knitwise, K1 tbl (in the yo from previous row), now slip the slipped st to the right over the stitch just made. This sets up your first SSK on the left side edge of the arch. Finish the row with YO, K 2. Turn. **79 sts**

Row 32: S 1, K 1, K 1 tbl; purl across working all Nubbs as before to last 3 sts. K 3. Turn. **79 sts**

Rows 33-38: Work chart as established.

* **Row 39:** S 1, K 2, K 2 tog, YO, K 5, YO, K 4, K 3 tog, YO, K 5, YO, K 4, K 3 tog; K 5, YO wk Nubb, YO, K 3, K 3 tog, K 3, YO, wk Nubb, YO, k 5, K 3 tog; K 5 YO, wk Nubb, YO, K 3, K 3 tog, K 3, YO, wk Nubb, YO, k 5, SSK, K 1, YO, K 2. Turn. **80 sts**

Row 40: S 1, K 1, YO, K 1 tbl; Purl across working all Nubbs as before to last 3 sts. K 3. Turn. **81 sts**

Row 41: S1 , K 10, YO, K 3, SSK, K 7, YO, K 3, K 3 tog; K 6, YO, wk Nubb, YO, K 2, K 3 tog, K 2 YO, wk Nubb, YO, K 6, K 3 tog; K 6, YO, wk Nubb, YO, K 2, K 3 tog, K 2 YO, wk Nubb, YO, K 6, SSK, K 2, K 1 tbl, YO, K 2. Turn. Cast on 18 sts as before. **100 sts**

Row 42: S 1, K 19, K 1 tbl; Purl across working all Nubbs as before to last 3 sts. K 3. Turn. **100 sts**

Row 43: S 1, K 2, K 2 tog; K 6, YO, K 1, YO, K 2, K 3 tog, K 6, YO, K 1, YO, K 2, K 3 tog; K 7 , YO, wk Nubb, YO, K 1, K 3 tog, K 1, YO, wk Nubb, YO, K 7, K 3 tog; K 7 , YO, wk Nubb, YO, K 1, K 3 tog, K 1, YO, wk Nubb, YO, K 7, SSK, K 22, K 1 tbl, YO, K 2. Turn. **101 sts.**

Row 44: S 1, K 1, YO, K 1 tbl; K 17; purl across , working all Nubbs as before to last 3 sts. K 3. Turn. **102 sts**

Row 45: S 1, K 2, K 2 tog; K 5, YO, K 3, YO, K 1, K 3 tog; K 5, YO, K 3, YO, K 1, K 3 tog; K 5, YO, K 5, SSK; , K 5, YO, K5, SSK; K 1, YO, wk Nubb, YO, K 7, K 3 tog, K 7, YO, wk Nubb, YO, K 1, K 3 tog; K 1, YO, wk Nubb, YO, K 7, K 3 tog, K 7, YO, wk Nubb, YO, K 1,

■ **work special ssk** - slip 1 st knitwise, K1 tbl (in the yo from previous row), now slip the slipped st to the right over the stitch just made. This sets up your first SSK on the left side edge of the arch. Finish the row with YO, K 2. Turn **103 sts**

Row 46: S 1, K 1, K 1 tbl; purl across working all Nubbs as before to last 3 sts. K 3. Turn. **103 sts**

Rows **47- 111** work as established on chart. Since this is the right side of the panel, you will end it one row shorter than the left , finishing row 112 across the entire unit, including the center section cast on stitches. Break yarn, leaving at least a 6 inch tail.

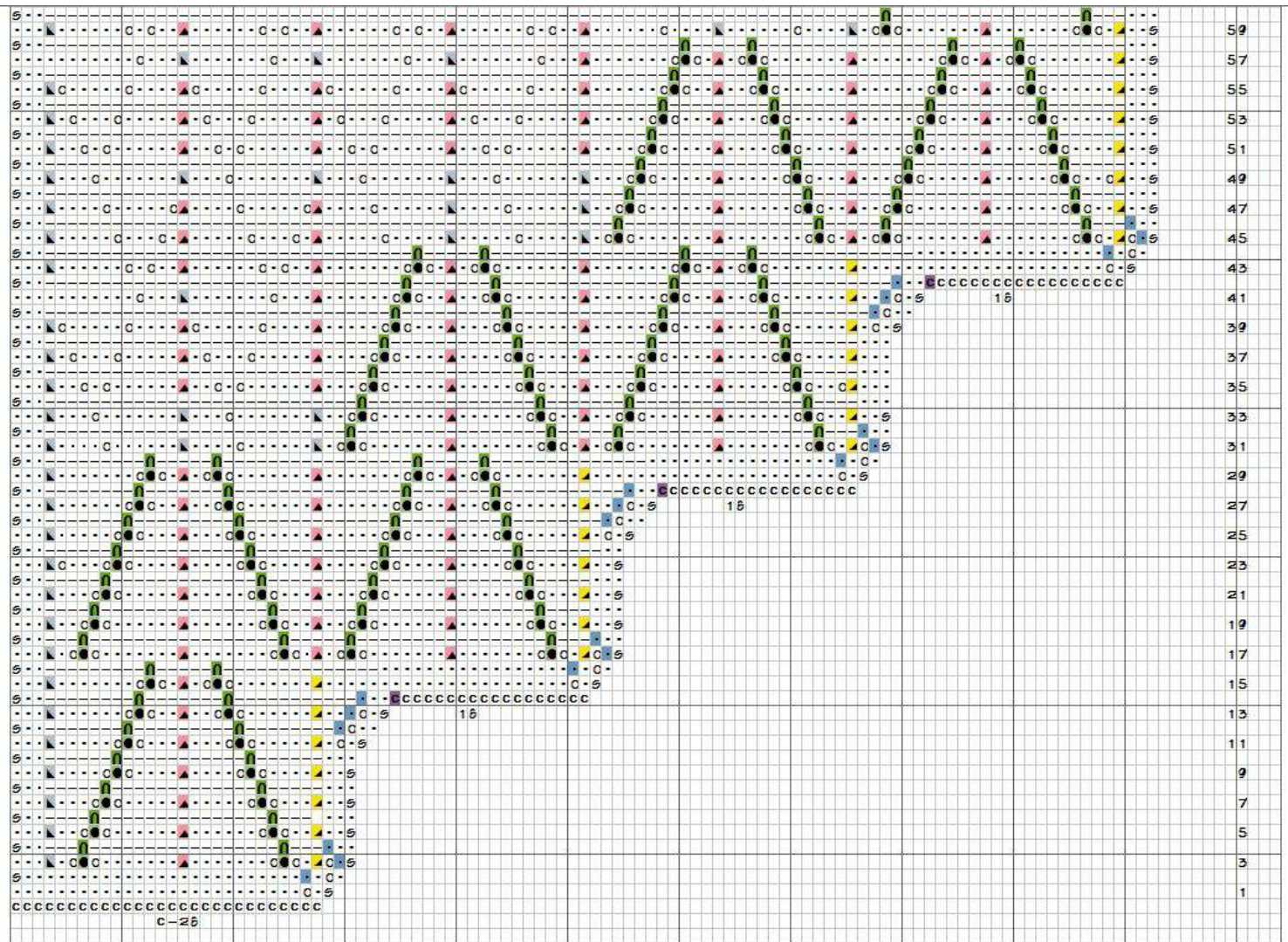
Next, proceed to the pattern for the left side panel.



* Note: This finish piece of 4 repeated Lilly of the Valley arches measures about 13 inches , including the border. I have blocked each K 3 tog ridge at 1 ½ inches apart.

The over all length is 8 ½ inches, for this sample.

Left Extended Panel Chart Knitted Sample



* Note: This finish piece of 4 repeated Lilly of the Valley arches measures about 13 inches, including the border. I have blocked each K 3 tog ridge at 1 1/2 inches apart.

The over all length is 8 1/2 inches, for this sample.

Written Instructions Cont-

Knitting Key

K= knit, P =purl, wk = work

YO = yarn over(unless otherwise indicated this is a yf move.

K tbl= knit through back loop

YF = yarn front YB = yarn back

St = stitch K 2 tog = knit two stitches together

K 3 tog = Slip one st knitwise, knit next 2 stitches together, Pssso, pass slipped st over the 2 stitches knitted together.

SSK = slip 2 sts knitwise, return to left needle, then knit the 2 sts through back loop.

Nubb = K 1, YO, K 1, YO, K 1 (5 loops)

Begin by using a knit cast on. Make slip knot on needle. Insert needle into loop and knit one. Slip this stitch on the left needle, picking up the loop with the left needle tip from front to back. Continue across until you have **28 stitches** on the needle. **DO NOT CAST On TIGHT. Just allow your loops to rest smoothly on the needle.**

Row 1: With yf, S 1. yb, K 1, YO, knit 26. Turn. 29 sts

Row 2: S 1 (as before), K 25, K1 tbl, K1 ,YO, K1. 30 sts

Row 3: S1, K 1 tbl, YO, K 2 tog, K1, YO, make **Nubb** (K1 YO K1 YO K1), YO, K7, K 3 tog, K7, YO, make **Nubb** as before, YO, K 1, SSK. K3. Turn.

Row 4: S 1, K 2; P 3, purl all 5 loops of Nubb tog, purl across to next Nubb, purl all 5 loops tog; last 3 sts, K 1 tbl, K2. Turn.

Rows: 5- 10: Follow chart as established.

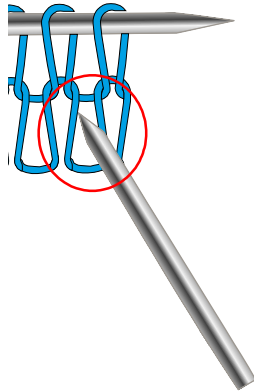
Rows 11-18: * The following starred rows form the transition to the next Lilly of the Valley arch.

Row 11: S 1, K 1, YO, K1, K 2 tog, K 5, YO, wk Nubb, YO, K3, K 3 tog, K 3, YO, wk Nubb, YO, K 5, SSK, K3. Turn. 32 sts

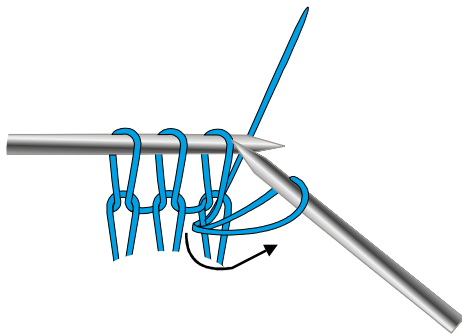
Row 12: S 1, K 2, purl across, purling together Nubbs as before, until 3 sts remain on left needle. Last 3 sts- K tbl, YO, K 2. Turn 33sts.

Row 13: S 1, K 1, YO, K 1 tbl, K 2, K 2 tog, K 6, YO, wk Nubb, YO, K 2, K 3 tog, K 2, YO, wk Nubb, YO, K 6, SSK, K 3. Turn. **34sts**

Row 14: S 1, K 2; Purl across to last Nubb. After Purling Nubb, P 11, K 1 tbl, K 2. Turn work around to right side.



Put the tip of the right needle into the space under the bar of the last 2 stitches as shown in the illustration to the left.



Knit one st. bringing the loop through and place it on the left needle.

Adjust the tension so that it makes a smooth transition in the curve to the stitches you are now going to cast on.

*** This stitch counts as stitch one of the 18 sts you are to cast on for the next addition.

Now knit cast on 17 more sts, as you did for the original cast on. Keep it relaxed. **52 sts.**

Row 15: S 1, K 1, YO, K 22, K 2 tog, K 7, YO, wk Nubb, YO, K 1, K 3 tog, K 1, YO, wk Nubb, YO, K7, SSK, K3. Turn, **53 sts**

Row 16: S 1, K 2; Purl across working both Nubbs, purl 14, K 17, K 1 tbl, K 1, YO, K 1. **54 sts.**

Row 17: S 1, K 1 tbl, YO, K 2 tog, K 1, YO, wk Nubb, YO, K 7, K 3 tog, K 7, YO, wk Nubb, YO, K1, K3 tog, K 1, YO, wk Nubb, YO, K7, K 3 tog, K 7, YO, wk Nubb, YO, K 1, SSK, K 3. Turn. **55 sts.**

Row 18: S 1, K 2; Purl across working through last Nubb until you have 3 sts remaining on needle. K 1 tbl, K 2. Turn.

*These preceding starred rows 11-18 are repeated every time there is an addition made to the width of the side panel. You will be working 2 Lilly of the Valley arches with each addition. Beginning with the 3rd arch, you will be adding the leave lace pattern to the left of the last arch.

Rows 19-24: Work as established on by chart.

* Row 25: S 1, K 1, YO, K1, K 2 tog; K 5, YO, wk Nubb, YO, K3, K 3 tog, K 3, YO, wk Nubb, YO, K 5, K 3 tog, K 5, YO, wk Nubb, YO, K3, K 3 tog, K 3, YO, wk Nubb, YO, K 5, SSK, K 3. Turn. 56 sts

Row 26: S 1, K 2, purl across, working all four Nubbs. Last 6 sts- P 3, K 1 tbl, K 2. Turn. 57sts

Row 27: S 1, K 1, YO, K 1 tbl, K 2, K 2 tog; K 6, YO, wk Nubb, YO, K 2, K 3 tog, K 2, YO, wk Nubb, YO, K 6, K 3 tog, K 6, YO, wk Nubb, YO, K 2, K 3 tog, K 2, YO, wk Nubb, YO, K 6, SSK, K 3. Turn. 58sts

Row 28: S1, K 2: Purl across working all 4 Nubbs. Last 14 sts- P 11, K 1 tbl, K 2. Turn. Begin your cast on as before, then cast on 17 more sts. 76 sts

Row 29: S 1, K 1, YO, K 22, K 2 tog; K 7, YO, wk Nubb, YO, K 1, K 3 tog, K 1, YO, wk Nubb, YO, K 7, K 3 tog; K 7, YO, wk Nubb, YO, K 1, K 3 tog, K 1, YO, wk Nubb, YO, K 7, SSK, K 3. Turn. 77sts

Row 30: S 1, K 2; Purl across working through all Nubb as before. P 14, K 17, K 1 tbl, K1, YO, K 1. Turn. 78sts

Row 31: S 1, K 1 tbl, YO, K 2tog; K 1, YO, wk Nubb, YO, K 7, K 3 tog, K 7, YO, wk Nubb, YO, K1, K 3 tog; K 1, YO, wk Nubb, YO, K 7, K 3 tog, K 7, YO, wk Nubb, YO, K1, SSK;

begin leaf lace pattern-

K 6, YO, K 4, SSK, K 6, YO, K 4, SSK, K 3. Turn. 79sts

Row 32: S 1, K 2; purl across working all 4 Nubbs. Last 6 sts-P 3, K 1 tbl, K 2. Turn. 79sts.

Rows 33-38: Work chart as established.

* Row 39: S 1, K 1, YO, K1, K 2 tog; K 5, YO, wk Nubb, YO, K3, K 3 tog, K 3, YO, wk Nubb, YO, K 5, K 3 tog, K 5, YO, wk Nubb, YO, K3, K 3 tog, K 3, YO, wk Nubb, YO, K 5, K 3 tog; Leaf lace- K 4, YO, K 5, YO, K 3 tog, K 4, YO, K5, YO, SSK, K 3. Turn, 80 sts.

Row 40: S 1, K 2; Purl across to through last Nubb. P 8, K 1 tbl, YO, K 2. 81 sts

Row 41: S 1, K 1, YO, K 1 tbl; K 2, K 2 tog; K 6, YO, wk Nubb, YO, K 2, K 3 tog, K 2, YO, wk Nubb, YO, K 6, K 3 tog, K 6, YO, wk Nubb, YO, K 2, K 3 tog, K 2, YO, wk Nubb, YO, K 6, K 3 tog; Lace pattern- K 3, YO, K 7, SSK, K 3, YO, K11. Turn **82 sts**

Row 42: S 1, K 2; Purl across through last Nubb. Purl 11, K 1tbl, K 2. Turn. Begin first cast on stitch as before. **Knit cast on 17** more stitches. **Total 100 sts**

Row 43: S 1, K 1, YO, K 22, K 2 tog; K 7, YO, wk Nubb, YO, K 1, K 3 tog, K 1, YO, wk Nubb, YO, K 7, K 3 tog; K 7, YO, wk Nubb, YO, K 1, K 3 tog, K 1, YO, wk Nubb, YO, K 7, K 3 tog; **begin leaf lace-** K 2, YO, K1, YO, K 6, K 3 tog, K 2, YO, K1, YO, K 6, SSK, K 3. Turn. **101 sts**

Row 44: S1, K 2; Purl across through last Nubb. P 14, K 18, K 1 tbl, K 1, YO, K 1. Turn. **102 sts.**

Row 45: S 1, K 1 tbl, YO, K 2tog; K 1, YO, wk Nubb, YO, K 7, K 3 tog, K 7, YO, wk Nubb, YO, K1, K 3 tog; K 1, YO, wk Nubb, YO, K 7, K 3 tog, K 7, YO, wk Nubb, YO, K1, SSK; **Begin leaf lace-** K 5, YO, K 5, SSK; K 5, YO, K 5, K3 tog, K 1, YO, K 3, YO, K 5, K 3 tog, K 1, YO, K 3, YO, K 5, SSK, K 3. Turn **103 sts**

Row: 46: S1, K 2; Purl across through last Nubb. Last 6 sts- P 3, K 1 tbl, K 2. Turn.

This completes the 4 stair step arches. Continue with the established pattern of the chart until you reach **row 112**. Work the border, then purl the remainder of the 103 sts. Turn you work to the right side. Knit cast on **281 sts for the center panel**. Turn. With the 103 sts of the right side panel on your left needle, purl across, finishing row 112, end K 3. Turn. You are now set up to complete the valance. **487 sts**

Print off your center panel, if you haven't already done so.

****For the purposes of these short instruction RP= right panel; CP= center panel; LP = left panel.**

Row 113: RP- S 1, K 2, K 2 tog; [K 3, YO, K 7, SSK] repeat 5 more time; K 7, YO, wk Nubb, YO, K 1, K 3 tog, K 1, YO, K 7, SSK;

CP - K 287 across center section;

LP - K 2 tog, K 7, YO, wk Nubb, YO, K 1, K 3 tog, K 1, YO, wk Nubb, YO, K 7, SSK; [K 7, YO, K 3, SSK] repeat 5 more time, end K 3. Turn.

Row 114: LP - S 1, K 2; Purl across, wk through both Nubbs, P9;

CP - K across all 287 sts.

RP - P 9, wk both Nubbs, purl across, end K 3. Turn

Row 115: RP - S 1, K 2, K 2 tog; [K2, YO, K 1, Yo, K 6, K 3 tog], repeat 4 more times; K 2, YO, K 1 YO, K 6, SSK; K 4, YO, K 6, K 3 tog, K 4, YO, K 6, SSK;

CP - [K 1, YO, wk Nubb, YO, K 7, K 3 tog, K 7, YO, wk Nubb, YO, K 1, K 3 tog]; repeat 10 more times; K 1, YO, wk Nubb, YO, K 7, K 3 tog, K 7, YO, wk Nubb, YO, K 1,

LP - SSK, K 6, YO, K 4, K 3 tog, K6, YO, K 4, SSK; [K6, YO, K 1, YO, K 2, K 3 tog]; repeat 4 more times; K 6, YO, K 1, YO, K 2, SSK, K 3. Turn.

Row 116: S 1 K 2; Purl across all panels, purling tog all Nubbs; end K 3. Turn

Row 117: **RP** - S1, K 2, K2 tog; [K 1, YO, K 3, YO, K 5, K 3 tog]; repeat 4 times; K 1, YO, K 3, YO, K 5, SSK, K 5, YO, K 5, K 3 tog, K 5, YO, K 5, SSK;

CP - K 2, YO, wk Nubb, YO, K 6, K 3 tog, K 6, YO, wk Nubb, YO, K 2, K 3 tog]; repeat 10 times; K 2, YO, wk Nubb, YO, K 6, K 3 tog, K 6, YO, wk Nubb, YO, K 2;

LP - SSK, K 5, YO, K 5, K 3 tog, K 5, YO, K 5, SSK; [K 5, YO, K 3, YO, K 1, K 3 tog]; repeat 4 times; K 5, YO, K 3, YO, K 1, SSK; K 3. Turn.

Row 118: S 1, K 2; Purl across all panels, purling tog all Nubbs; end K 3. Turn

Now that your pattern is established you can follow the chart to completion. Once the pattern portion is complete, the next step is to knit the casing for your rod. This portion of the valance is done in Stockinette stitch, knitting the right side, and purling the wrong side. You can also use this portion to add additional length if needed.

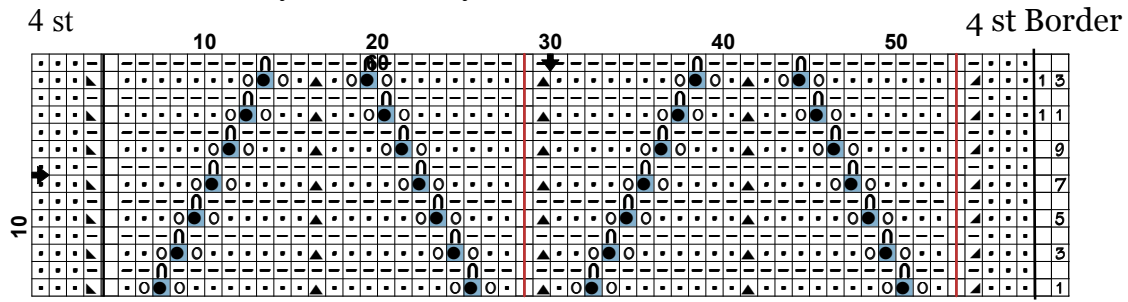
Casing- See page 2 of this tutorial.

****Note** - You will notice that the K 3 tog's form vertical lines in the lace. To keep the sequence in order it was necessary at times to use a SSK in place of the K 3 tog. I have done my best to make sure that the symbols are correct, however, if you find a spot where you are short a st, then look to the left, checking the pattern sequence- you may have to replace a K 3 tog, with a SSK, to have the stitch count you need. If you find such a place or error, let me know so that I can correct it. As you can well imagine, looking at this large chart is hard on the eyes, so, I won't be offended if you find an error.

KT

Curtain Panel Charts

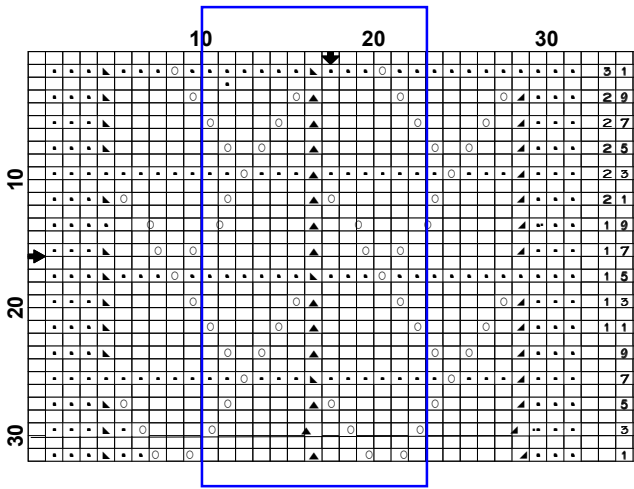
Chart A - Lilly of the Valley Lace border.



Left edge section with 4 st Border

Repeat this section as many times as needed for your width (24st)

Chart B- used for body of lace panel above Lilly of the Valley bottom border.



If you wish to add a lower panel to your window, use the basic pattern charts on this page.